

## What is CRAFTA®?

Physical therapists, manual therapists, speech and language therapists and dentist show an increased interest in the craniofacial and temporomandibular region. The professions also show a positive development regarding interdisciplinary cooperation. Based on this background, CRAFTA (Cranial Facial Therapy Academy) was founded by Prof. Harry von Piekartz PhD and other initiators of various disciplines.

## The aims of CRAFTA®

- Development of a systematic international education program for the assessment, treatment and management of patients with temporomandibular and craniofacial dysfunctions and pain, based on the current evidence.
- International courses with contributions from numerous professional disciplines (e.g. dentists, orthopaedic surgeons).
- Quality control in education and application of craniofacial therapy.
- Promotion of interdisciplinary cooperation with dentists, orthopaedic surgeons, otolaryngologists and neurosurgeons who work with this group of patients.
- Definition of a quality standard, mainly for physical therapists, manual therapists and other interested paramedic professions.
- Stimulation and initiation of research in the craniofacial field: support of scientific trials and organizations within the physiotherapy or manual therapy profession.
- Public relations and contact to other professional bodies. The current most important aim is the education of physical therapists and manual therapists in the following skills:
  - Specialized assessment of patients with headaches, neck pain and facial pain.
  - Analysis of the assessment results and interpretation based on current clinical reasoning strategies.
  - Planning of treatment and management in the long term, based on optimum evidence based practice (EBP).
  - Specialized communication skills that support the therapy and the process of reaching an interdisciplinary consensus.

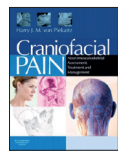
## Next to Certification?

- For quality assurance different courses and events will be organized for therapists, e.g.
- Clinical days, 3 days course, depending on patient treatment and presentation the existing knowledge will be taken to an advanced level
  - Supervision in practice: Under the guidance of a CRAFTA Supervisor therapeutical questions will be addressed.

Certified therapists will have access to the closed Log-in area and will be admitted for the list of certified therapists after registration on the CRAFTA Website. Furthermore, it is possible to become a member of the CRAFTA-Network, an association promoting the interests of CRAFTA therapists, which also supports therapists with a variety of information, e.g. leaflets for patients.

### The Compendium for the courses are the following books:

**Craniofacial Pain Neuromuskuloskeletal Assessment, Treatment and Management**  
Harry J. M. von Piekartz, PhD, MSc, PT, MT, Netherlands;  
ISBN 0750687746, Paperback, 754 Pages, 525 Illustrations  
Butterworth Heinemann (2007)



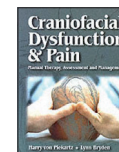
## The Team

- Prof. Dr. Harry J. M. von Piekartz**, PhD, MSc, BSc, MT, Ootmarsum (NL) Senior instructor und Training supervisor  
**Christian Voith**, PT, MT, Klagenfurt (A)  
**Roald Luning**, BSc, PT, MT, Nijverdal (NL)  
**Michiel Trouw**, PT, MMT (NL)  
**Daniela von Piekartz-Doppelhofer**, PT, MT, Ootmarsum (NL)  
**Pieter Westerhuis**, BSc, PT, MT, Langendorf (CH)  
**Heidi Groß** PT, MT, Saarlouis (D)
- Assistants**  
 Monika Knust-Waßmuth, Ute Wiedenmann, Lydia Stelzer, Marisa Hoffmann, Miranda Hanskamp, Matthias Grötzinger, Joeri Rogier, Sabine Geier

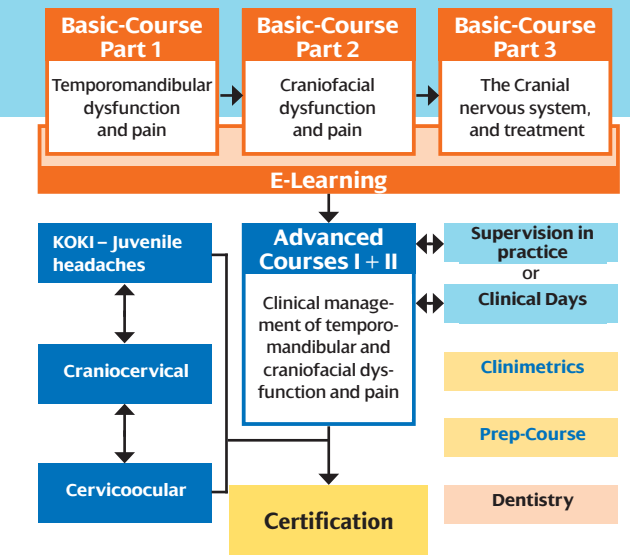
## Scientific Associates and Invited Speakers

- Geert Aufdemkampe**, MSc, PT, Senior research associate Hogeschool van Utrecht (NL)  
**Prof. Dr. Jan Kool**, PT, Health Sciences, Valens (CH)  
**Dr. Horst Kares**, Dentist, Saarbrücken (D)  
**Dr. Theo Klusters**, Dentist, Maastricht (NL)  
**Dr. Brigitte Losert-Bruggner**, Dentist, Lampertheim (D)  
**Prof. Dr. Harry J.M. von Piekartz**, PhD, MSc, PT, MT (NL)  
**Prof. Dr. Johan W.S. Vlaeyen**, Psychologist, Department of Clinical, Medical, and Experimental Psychology Maastricht University, (NL)  
**Prof. Dr. Christoff Zalpour**, University of Applied Science, Fachhochschule Osnabrück (D)  
**Prof. Dr. Mariano Rocabado**, University of Andrés Bello, Santiago de Chile (RCH)

**Craniofacial Dysfunction and Pain, Manual therapy Assessment and Management**  
 von Piekartz, H.; Bryden, L.: Butterworth – Heinemann, Oxford, 2000.



## Education programme in Temporomandibular and Craniofacial Dysfunction and Pain (CRAFTA®)

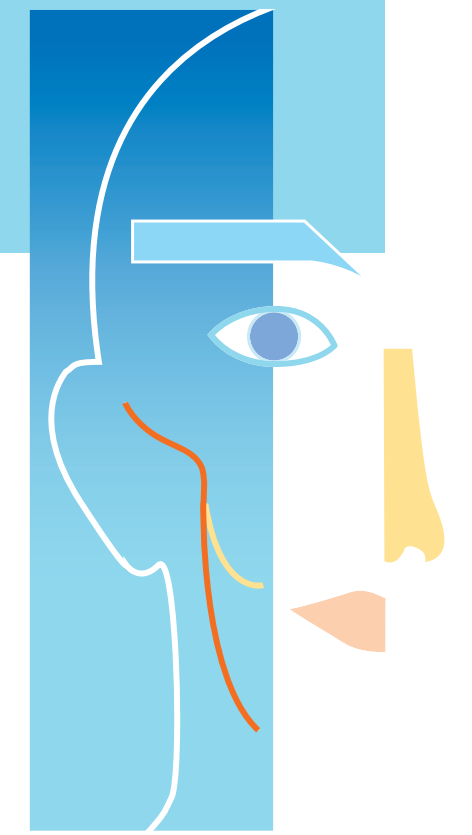


Every two years there will be a CRAFTA®-Congress.

Contact address:  
 CRAFTA®  
 Wandalenweg 14 – 20,  
 20097 Hamburg  
 Deutschland  
 Tel. + 49-40-2 54 13 38 60  
**www.crafta.org**



## Temporomandibular and craniofacial dysfunction and pain



# Temporomandibular and craniofacial dysfunction and pain

## Basic-Course Part 1 4 days

Temporomandibular dysfunction and the functional relationships  
Pain mechanism of the relevant structures of the temporomandibular region, the function of the temporomandibular joint (TMJ) and the neurophysiological, biomechanical and functional relations to the cervical spine, the cranium and the nervous system are the main contents of the course. The subjective examination, physical examination and treatment techniques of the TMJ and an update on neurobiological and anatomical knowledge of the TMJ function are primary topics.

### Theoretical Contents:

- Functional neuroanatomy
- Palpation of reference points
- Pathologies
- Differential Diagnosis

### Practice:

- Physical examination
- Treatment techniques
- Treatment planning and management, in general and regarding syndroms
- Patient presentation and clinical follow up

## Basic-Course Part 2 3 days

Craniofacial Dysfunction and its functional relationships  
The cranial function and knowledge of the evidence-based adaptation and movement patterns of the cranium (craniodynamics) are presented in this course. It will provide an overview of pain mechanisms, assessments and treatment techniques of the calvarium and gives you an update on neurobiological and anatomical knowledge of the cranial structures and function.

### Theoretical Contents:

- General Phylogenesis and ontogenesis
- Craniodynamics
- Functional anatomy of the neurocranium and the facial skeleton
- Clinical patterns and pain mechanism of the cranial region

### Practice:

- Palpation of the cranium and the facial skeleton
- Physical examination of the craniofacial area
- Treatment and management of specific-syndroms, e.g. tinnitus, cervical headache and neuralgia

## Basic-Course Part 3 3 days

The cranial nervous system. Assessment, Treatment and Management  
This module focuses on the recognition of clinical patterns of cranial nerve dysfunctions and neuropathies. Conduction tests and neurodynamic tests of all cranial nerves are presented as well as nerve palpation. The practical sessions will include the mobilization, fascilitation and treatment of extracranial nerves. Neurodynamic tests of the cranial nervous system and the presentation of the syndroms outlined below round up this in-depth course.

### Theoretical Contents:

- Physical dysfunctions of the nervous system
- Functional neuroanatomy and neurodynamics of the cranial nerves
- Peripheral neuropathic pain mechanisms and cranial nerves
- Differential diagnosis
- Clinical consequences regarding cranial nerves

### Practice:

- Conduction tests
- Assessment and treatment by palpation techniques
- Neurodynamic tests of the cranial nerves
- Treatment principles
- Treatment of syndroms, e.g. vasomotoric headaches, cranial neuropathy, atypical facial nerve pain, trigeminal neuralgia, facial nerve paresis, eye dysfunction, speech and swallowing dysfunctions.
- Patient presentation

## Advanced Course I + II 2 x 5 days

Clinical Management of Temporomandibular Dysfunctions and Pain

10-day practical course aiming to form hypotheses, reflect decisions and achieve an efficient management of complex temporomandibular and craniofacial syndroms. A minimum of 16 hours patient assessment and management performed by the course participants including a detailed treatment protocol are scheduled.

### Course Topics

- Children with ear pain, temporomandibular dysfunctions (practical update)
- Rehabilitation of facial nerve paresis
- Mastication analysis and rehabilitation
- Patient treatment under clinical supervision
- Swallowing dysfunctions and functional dysphonia
- Eye dysfunction and pain
- Clinimetrics of the craniofacial region
- Patient presentation with follow up
- Tinnitus and (Pseudo-)sinusitis

## KOKI – Juvenile headaches 3 days

Headache in children

Although headaches are an increasing problem among children and young adults, many questions remain about the etiology and the management of headaches in children. How can physical therapy help this patient group? In this course, evidence based practice (EBP) is used to determine the current state of physical therapy in this area and clinical examples from the biopsychosocial model are employed to discuss how physical therapy can contribute in this field.

### Course topics:

- Headaches among children: the nature of the problem
- Growth as a possible contributing factor for dysfunctions of the neuromusculoskeletal system
- Recurrent headaches: causes, evoking and contributing factors.
- Craniocervicogenic dysfunction in children
- Assessing headaches in children: A practical concept
- Physical examination of the craniofacial region and cranial neurodynamics
- Management of recurrent headaches among children
- Physical and manual therapy treatment approaches
- Cognitive-behavioral approach in the management of recurrent headaches

## E-Learning 3 days

The KOKI course, Clinimetrics Course, Craniocervical Course and the Cervicoocular-Course can be booked by physical therapists, dentists, and speech and language therapists without having attended one of the Basic Courses.

### Clinimetrics

After participating this course the student is able to complete and adapt the digital CRAFTA specific questionnaire for each patient.

The craniofacial, temporomandibular, cervical and posture measurement methods are discussed and practiced. Based on patient examples it will be demonstrated when it is indicated to apply clinimetrics in daily practice.

The Basic courses 1-3 including E-learning are required for the Advanced courses I + II.

After occupancy of the Advanced courses I + II, KOKI-Course, Cervico-ocular-Course, Craniocervical-Course, and Internship or the attendance of Clinical Days the opportunity to take a certification exam exists.

Visit [www.CRAFTA.org](http://www.CRAFTA.org) (Education)

### Cervicoocular

Cervicoocular (Dys-) function and balance

The functional relationship between craniocervical and vestibulo-ocular (Dys-)function of postural control are clarified. Alternatively the influence of the ocular dysfunction on the neuromusculoskeletal system will be discussed in detail. Further assessment and treatment are demonstrated.

### Course topics

- Cervical – vestibulo – ocular (CVO) reflexsystems, mechanism, dysfunction and symptoms
- Assessment of the CVO reflexsystems
- neuro-muscular-skeletal ocular assessment
- Rehabilitation and management of cervical - vestibulo – ocular dysfunctions in children and adults

## 3 days

### Craniocervical

The craniocervical region as a part of a chain

This module is predominantly practically orientated.

- Overview of the current classification of headache as well as anatomy and biomechanics of the craniocervical region
- On the basis of case studies different clinical patterns e.g. migraine, tension headache, cervicogenic headache and cervical instability are reviewed.

- Differentiation tests of craniocervical versus temporomandibular, craniofacial, and cranioneural regions are presented
- Treatment and management strategies will be theoretically discussed and practiced in hands-on sessions.
- Patient demonstration

## 3 days

